

# ANALYSIS REPORT

## Analysis conditions

Code: 201909001

Flow Rate: 1.4mL/min

Pressure: 10.5 MPa

Suppressor Current: 50 mA

Range: 2 Level

Size: 150mm\*4.0mm

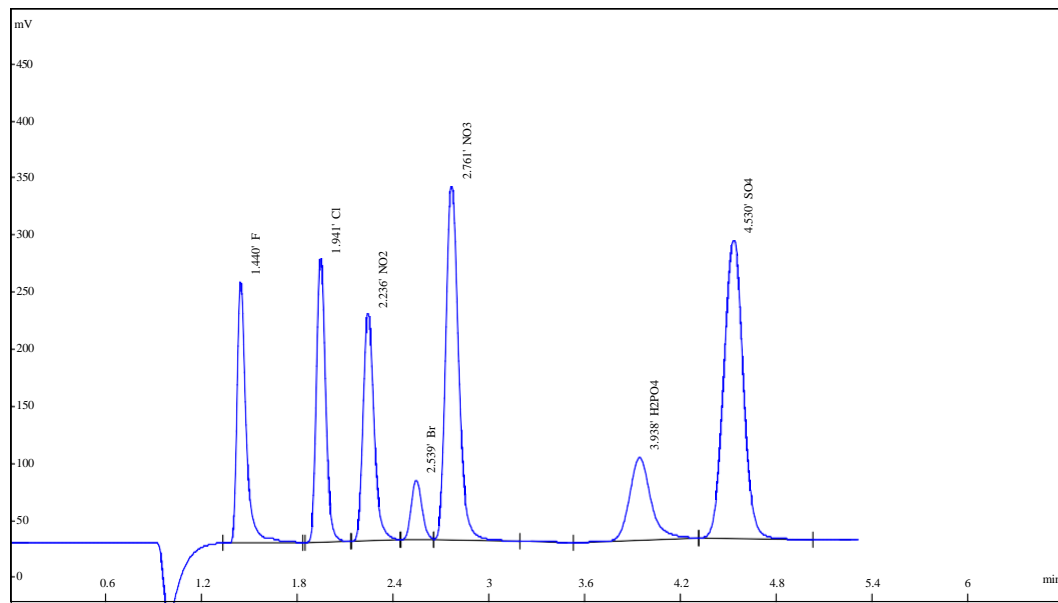
Eluent: 4.8mM Na<sub>2</sub>CO<sub>3</sub>+3.6mM NaHCO<sub>3</sub>

Temperature: 35°C

Injection Volume: 25 uL

Detector: Suppressed conductivity

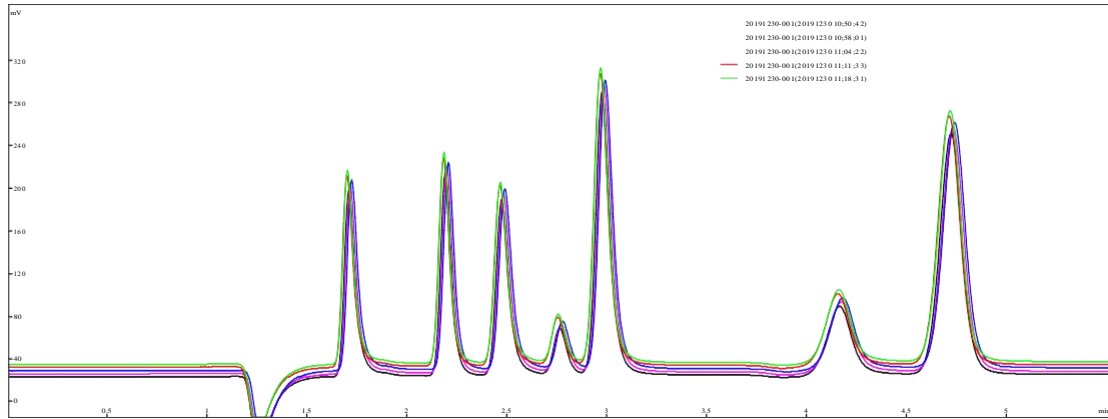
## Standard Spectrogram



No.	Ret.Time	Name	Concentration	Height	Resolution	Theoretical Plates	Asymmetry
1	1.440	F	2	228314	5.11	3429	1.58
2	1.941	Cl	3	246592	2.75	6704	1.23
3	2.236	NO <sub>2</sub>	5	198662	2.57	5918	1.31
4	2.539	Br	2	51619	1.74	7604	1.15
5	2.761	NO <sub>3</sub>	10	308660	6.15	6767	1.24
6	3.938	H <sub>2</sub> PO <sub>4</sub>	10	72519	2.56	4217	1.29
7	4.530	SO <sub>4</sub>	10	260447	0.00	7239	1.02

# Repeatability and linearity

## Repeatability:



## linearity:

